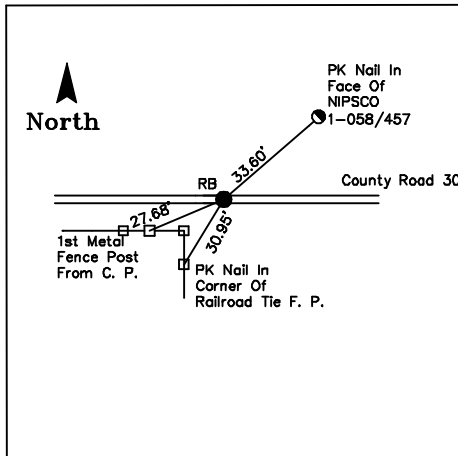


Harrison Township
 Harrison TWP, Section Corner Project
 January 13, 1997
 Crew: J. Bowers, J. Williams

Sec. 3-36-5



GPS coordinates herein given are results of GPS survey by Elkhart County Surveyor's office, May - October 2002.

State Plane Coordinates, Indiana East, NAD 1983		Elevations 1988 Vertical Datum
Northing	Easting	Elevation
XXXX	XXXX	XXXX

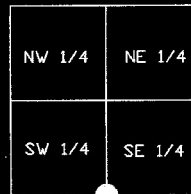
Note: Elevations are subject to change
 due to recession and rebaling of monuments

Original Cards Call For A Railroad Spike. A 2" X 2" monument was set over a stone with a cross cut in it on May 13, 1968 as recorded in the Section Corner Record Book. In a survey by ASURCO, INC., Ronald A. Weaver, surveyor calls for a railroad spike set in November-December, 1980 as recorded in ASURCO, INC.'s Records as Job Number 80-0412. It was recovered in the 1980's as recorded on the Original Section Corner Cards. A 3/4" rebar was found on January 13, 1997 as recorded in Harrison Field Book 1, Page 23.

Section Corner Data Sheet

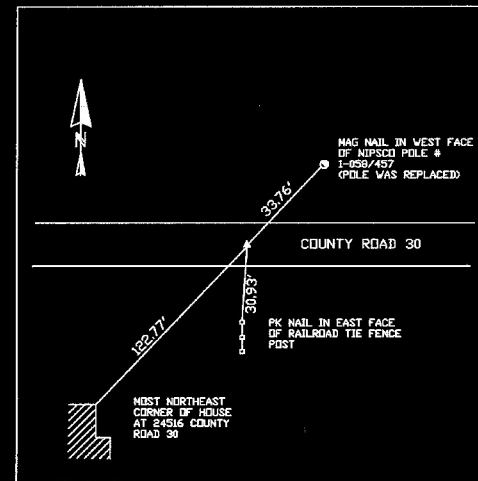


Elkhart County Surveyor
 4230 Elkhart Road, Goshen IN
 (574) - 875 - 3380



HARRISON TOWNSHIP
 OCTOBER 16, 2009
 CREW: R. JUSTICE & T. JUSTICE

SEC. 3-36-5



ON OCTOBER 12, 2009, A 3/4" REBAR WAS FOUND FLUSH AT ROAD SURFACE, EXCAVATED HOLE 2 FEET AND FOUND NOTHING. A HARRISON MONUMENT WAS SET IN THE SAME LOCATION AS REBAR.

SECTION CORNER DATA SHEET



ADVANCED LAND SURVEYING OF
 NORTHERN INDIANA, INC.
 17120 COUNTY ROAD 46, NEW PARIS, INDIANA 46553
 (574) 831-5870 - FAX (574) 831-5875
 RONNIE L. JUSTICE R.L.S.