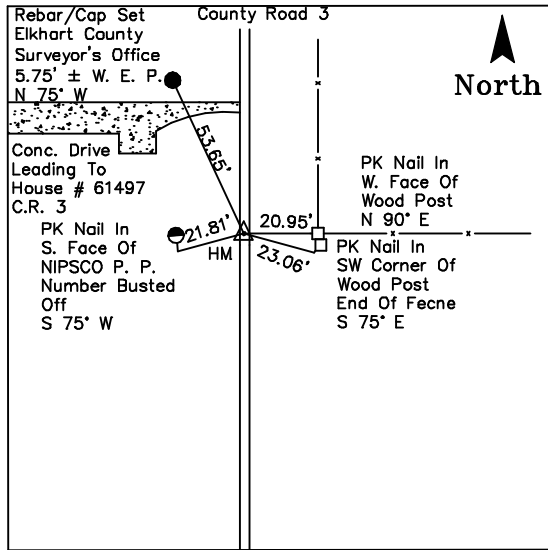


Olive Township  
 Olive TWP. Section Corner Project  
 June 18, 2008  
 Crew: J. Zakutansky, J. Chupp

Sec. 1-36-4



Harrison Reset  
 \_\_\_\_\_  
 At Road Surface  
 \_\_\_\_\_  
 \_\_\_\_\_

GPS coordinates herein given are results of GPS survey by Elkhart County Surveyor's office, May - October 2002.

State Plane Coordinates, Indiana East, NAD 1983		Elevations 1988 Vertical Datum
Northing	Easting	Elevation
xxxx	xxxx	xxxx

Note: Elevations are subject to change  
 do to relocation and raising of monuments

A railroad spike was found on March 14, 1977 as recorded in Field Book 2, Page 63. It was recovered on June 11, 1987 as recorded in the Section Corner Record Book. It was recovered again in concrete on August 3, 1994 as recorded in Olive Field Book 1, Page 29. It was recovered yet again on on October 7, 1998. It was replaced with a HM on June 10, 1999 as recorded in Olive Field Book 2, Page 2. New ties were taken in 2004. It was reset in 2006 as part of paving project as recorded in Olive Field Book 3, Page 10. It was recovered on June 18, 2008.

Section Corner Data Sheet



Elkhart County Surveyor  
 4230 Elkhart Road, Goshen IN  
 (574) - 875 - 3380